

**GREEN VALLEY
NATURE PRESERVE**

Biodiversity Report

Submitted by:

Amy Bandman & Kathy Wine, River Action, Inc. &
Michael Reisner, Upper Mississippi Studies Center

Photos by: Tim Gillman & Mik Holgersson



Bio-Diversity Day 2013

Table of Contents

Introduction to Bio-Diversity Day.....	3
Participating Scientific Experts.....	4
Comprehensive Species Lists	5
Scientific/Common Names:	
Plants	5
Insects.....	8
Birds.....	10
Amphibians	12
Mammals.....	12
Reptiles	12
Worms	12
Summary of Species.....	13



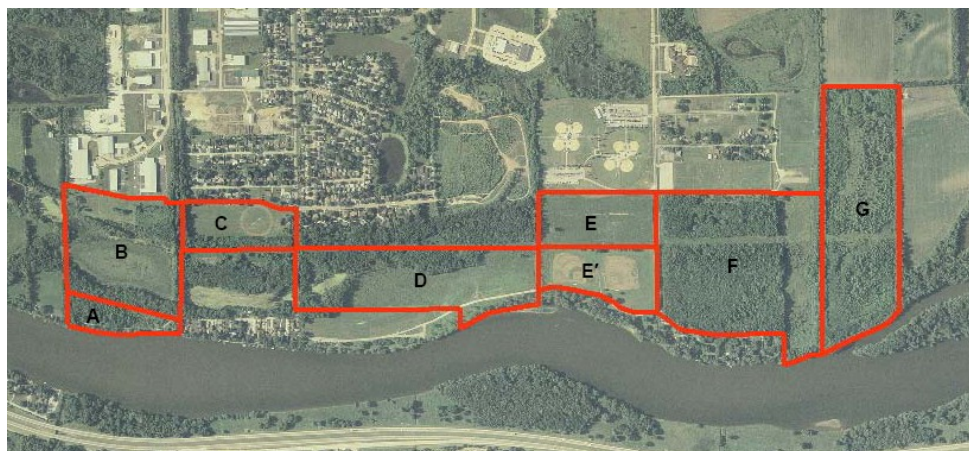
Introduction to Bio-Diversity Day:

River Action partnered with The Upper Mississippi Studies Center of Augustana College to hold their first Bio-Diversity Day to educate the community about the variety of the region's living things. The event took place at Green Valley Nature Preserve in Moline, IL on August 31, 2013 and brought together students, scientific experts and community members in a hands-on field experience to discover and record this site's biodiversity. Together, over 60 participants and 25 scientific experts observed and recorded species data to create the comprehensive biodiversity report for Green Valley, finding a total of 429 species.

The project's main goal was to teach students and the public about local natural areas, wildlife and vegetation through hands-on learning. Throughout the event the public had first-hand exposure to the scientific process and data collection. This learning experience increased awareness of the biodiversity that is in the Quad Cities region. The Quad Cities is a large metropolitan area, but the region is still rich with wildlife. River Action has already identified 63 natural areas within an hour's drive of the Quad Cities as part of their Quad Cities Wild Places program, a collaborative effort to improve conservation, awareness and access. Green Valley is one of the Quad Cities' 63 Wild Places.

Another goal of Bio-Diversity Day was to collect meaningful data on wildlife and vegetation and produce a biodiversity report for the preserve. This base inventory will serve as a future educational and resource management tool. Green Valley is currently under restoration to re-establish a healthy wetland along the Rock River in Moline. Creating a comprehensive biodiversity report at Green Valley is vital at this point to be able to evaluate the restoration's success in the future. Information from Bio-Diversity Day also assesses the ecosystem goods and services (water capture, storage, and release, nutrient and pollution filtration, wildlife habitat, etc.) currently provided by these vital urban green spaces. Findings, not only from the initial but from future biodiversity studies will be educational tools to inform the Quad Cities community about nature's resilience and restoration efforts. Future biodiversity inventories will help measure the outcome of the restoration project.

Parcels of Green Valley's 250 acre site were pre-designated according to the map below and experts were assigned to a parcel during morning and afternoon shifts (excluding parcel C), 8:00am-11:30am, and 1:00pm-3:30pm respectfully. Experts took teams of three to five members of the public into the field to aid in collecting data. Experts identified the species they could while out in the field, and those they could not identify were brought back to



the event's headquarters to analyze. Each expert created his/her own species list and all lists were compiled by River Action staff to create one comprehensive report. Below are those findings.

Source: USDA-FSA Aerial Photography National Agriculture Imagery Program (NAIP).

River Action and the Upper Mississippi Studies Center have made a lasting partnership. Bio-Diversity Day will be an annual event at a different Wild Place each year. This ongoing effort will capture a good picture of the biodiversity of the region.

Participating Experts

Amy Blair, St. Ambrose University, Davenport, IL
Bohdan Dziadyk, Augustana College, Rock Island, IL
Brian Ritter, Nahant Marsh, Davenport, IA
Carlisle Evans Peck, Augustana College Intern, Rock Island, IL
Cathleen Monson, BioEco Research and Monitoring Center, Hampton, IL
Chris Dietrich, Illinois Natural History Survey, Champaign, IL
Dick Sales, Quad City Audubon Society, Bettendorf, IA
Peter Chege, Black Hawk College, Moline, IL
Todd Linscott, Black Hawk College, Moline, IL
Dylan Weese, St. Ambrose University, Davenport, IA
Heather Arras, Nahant Marsh, Davenport, IA
Jason Koontz, Augustana College, Rock Island, IL
Jennifer Burnham, Augustana College, Rock Island, IL
Kara Noonan, Augustana College Intern, Rock Island, IL
Kelly McKay, BioEco Research and Monitoring Center, Hampton, IL
Kevin Geedey, Augustana College, Rock Island, IL
Kimberly Murphy, Augustana College, Rock Island, IL
Michael Reisner, Upper Mississippi Studies Center, Rock Island, IL
Mikael Holgersson, Vildmark Inc, Rock Island, IL
Norm Moline, Augustana College, Rock Island, IL
Reuben Heine, Augustana College, Rock Island, IL
Tara Cullison, Augustana College Intern, Rock Island, IL
Tierney Brosius, Augustana College, Rock Island, IL
Tim Chambers, Native Plant Society, Rock Island, IL





Plants

189 Species

Scientific/Common Names

<i>Abutilon theophrasti</i>	Velvet-Leaf	<i>Bidens frondosa</i>	Devil's Beggarticks
<i>Acer negundo</i>	Boxelder	<i>Boehmeria cylindrica</i>	False Nettle
<i>Acer saccharinum</i>	Silver Maple	<i>Bromus inermis</i>	Smooth Brome
<i>Agastache nepetoides</i>	Yellow Giant Hyssop	<i>Calystegia sepium</i>	Hedge Bindweed
<i>Agropyron repens</i>	Quackgrass	<i>Campanula americana</i>	American Bellflower
<i>Alisma subcordatum</i>	American Water Plantain	<i>Carex grayi</i>	Gray's Sedge
<i>Amaranthus hybridus</i>	Smooth Pigweed	<i>Carex vulpinoidea</i>	Fox Sedge
<i>Amaranthus retroflexus</i>	Redroot Pigweed	<i>Carya illinoensis</i>	Pecan
<i>Ambrosia artemisiifolia</i>	Common Ragweed	<i>Celtis occidentalis</i>	Hackberry
<i>Ambrosia trifida</i>	Giant Ragweed	<i>Chaerophyllum procumbens</i>	Spreading Chervil
<i>Ammannia coccinea</i>	Valley Redstem	<i>Cichorium intybus</i>	Chicory
<i>Amorpha fruticosa</i>	False Indigo Bush	<i>Cicuta maculata</i>	Spotted Water Hemlock
<i>Andropogon gerardii</i>	Big Bluestem	<i>Cirsium arvense</i>	Canada Thistle
<i>Anemone canadensis</i>	Canadian Anemone	<i>Cirsium discolor</i>	Field Thistle
<i>Apios americana</i>	Groundnut	<i>Commelina communis</i>	Asiatic Dayflower
<i>Apocynum cannabinum</i>	Dogbane	<i>Conium maculatum</i>	Poison Hemlock
<i>Arctium lappa</i>	Greater Burdock	<i>Conyza canadensis</i>	Marestail
<i>Arctium minus</i>	Lesser Burdock	<i>Cornus drummondii</i>	Roughleaf Dogwood
<i>Asclepias incarnata</i>	Swamp Milkweed	<i>Cornus obliqua</i>	Silky Dogwood
<i>Asclepias syriaca</i>	Common Milkweed	<i>Cryptotaenia canadensis</i>	Canadian Honewort
<i>Aster ericoides</i>	White Aster	<i>Cynoglossum officinale</i>	Gypsyflower
<i>Aster lateriflorus</i>	Calico Aster	<i>Cyperus esulentus</i>	Yellow Nutsedge
<i>Aster ontarionis</i>	Ontario Aster	<i>Cyperus strigosus</i>	Strawcolored Flatsedge
<i>Aster ptarmicoides</i>	Upland White Aster	<i>Daucus carota</i>	Queen Anne's Lace
<i>Bidens aristosa</i>	Bearded Beggarticks	<i>Desmodium canadense</i>	Showy Ticktrefoil
<i>Bidens connata</i>	Purple-Stem Beggarticks	<i>Dioscorea villosa</i>	Wild Yam

Plants

<i>Dipsacus laciniatus</i>	Cut-Leaf Teasel
<i>Duchesnea indica</i>	Indian Strawberry
<i>Echinochloa crusgalli</i>	Barnyard Grass
<i>Eclipta prostrata</i>	False Daisy
<i>Elaeagnus umbellata</i>	Autumn Olive
<i>Eleocharis acicularis</i>	Needle Spikerush
<i>Elesine indica</i>	Goosegrass
<i>Elymus virginicus</i>	Virginia Wild Rye
<i>Equisetum arvense</i>	Field Horsetail
<i>Erigeron annuus</i>	Annual Fleabane
<i>Eupatorium rugosum</i>	White Snakeroot
<i>Eupatorium serotinum</i>	Late Boneset
<i>Fraxinus pennsylvanica</i>	Green Ash
<i>Gaura biennis</i>	Bedstraw
<i>Geranium maculatum</i>	Spotted Geranium
<i>Geum canadense</i>	White Avens
<i>Geum laciniatum</i>	Rough Avens
<i>Glechoma hederacea</i>	Creeping Charlie
<i>Gleditsia triacanthos</i>	Honey Locust
<i>Helianthus divaricatus</i>	Woodland Sunflower
<i>Helianthus strumosus</i>	Paleleaf Woodland Sunflower
<i>Helianthus tuberosus</i>	Jerusalem Artichoke
<i>Heteranthera limosa</i>	Blue Mudplantain
<i>Hibiscus laevis</i>	Halberdleaf Rosemallow
<i>Humulus japonicus</i>	Japanese Hop
<i>Impatiens capensis</i>	Jewelweed
<i>Ipomoea hederacea</i>	Ivy-Leaf Morning Glory
<i>Iris shrevei</i>	Wild Blue Iris
<i>Juglans nigra</i>	Black Walnut
<i>Juniperus virginiana</i>	Eastern Red Cedar
<i>Lactuca biennis</i>	Tall Blue Lettuce
<i>Laportea canadensis</i>	Wood Nettle
<i>Leersia oryzoides</i>	Rice Cutgrass
<i>Leersia virginica</i>	Whitegrass
Lemnaceae	Duckweed
<i>Lobelia cardinalis</i>	Cardinal Flower
<i>Lonicera maackii</i>	Maack's Honeysuckle



<i>Lonicera tartarica</i>	Tatarian Honeysuckle
<i>Lysimachia nummularia</i>	Moneywort
<i>Melilotus alba</i>	White Sweet-Clover
<i>Menispermum canadense</i>	Common Moonseed
<i>Mentha arvensis</i>	Wild Mint
<i>Morus alba</i>	White Mulberry
<i>Muhlenbergia frondosa</i>	Wirestem Muhly
<i>Nuphar advena</i>	Spatterdock
<i>Oenothera biennis</i>	Evening Primrose
<i>Oenothera laciniata</i>	Cutleaf Evening Primrose
<i>Oxalis stricta</i>	Yellow Woodsorrel
<i>Panicum capillare</i>	Witchgrass
<i>Panicum dichotomiflorum</i>	Fall Panicgrass
<i>Panicum virgatum</i>	Switchgrass
<i>Parthenocissus quinquefolia</i>	Virginia Creeper
<i>Penthorum sedoides</i>	Ditch Stonecrop
<i>Phalaris arundinacea</i>	Reed Canarygrass
<i>Phyla lanceolata</i>	Lanceleaf Frogfruit
<i>Physalis virginiana</i>	Virginia Groundcherry
<i>Physostegia virginiana</i>	Obedient Plant
<i>Phytolacca americana</i>	American Pokeweed
<i>Pilea pumila</i>	Canadian Clearweed
<i>Plantago lanceolata</i>	Narrowleaf Plantain
<i>Plantago major</i>	Common Plantain

Plants

<i>Plantago rugellii</i>	Blackseed Plantain	<i>Scutellaria lateriflora</i>	Blue Scullcap
<i>Platanus occidentalis</i>	American Sycamore	<i>Securigera varia</i>	Crown Vetch
<i>Polygonum hydropiperoides</i>	Swamp Smartweed	<i>Setaria faberi</i>	Japanese Bristlegrass
<i>Polygonum amphibium</i>	Water Knotweed	<i>Setaria gauca</i>	Yellow Foxtail
<i>Polygonum convolvulus</i>	Black Bindweed	<i>Sicyos angulatus</i>	Bur Cucumber
<i>Polygonum hydropiper</i>	Marshpepper Knotweed	<i>Silphium perfoliatum</i>	Cup Plant
<i>Polygonum lapatrifolia</i>	Curlytop Knotweed	<i>Sium suave</i>	Water Parsnip
<i>Polygonum pensylvanicum</i>	Pennsylvania Smartweed	<i>Smilacina racemosa</i>	Solomon's Plume
<i>Polygonum punctatum</i>	Dotted Smartweed	<i>Smilax hispida</i>	Bristle Greenbrier
<i>Polygonum scandens</i>	False Buckwheat	<i>Solanum carolinense</i>	Carolina Horsenettle
<i>Populus deltoides</i>	Eastern Cottonwood	<i>Solanum ptycanthum</i>	West Indian Nightshade
<i>Potentilla simplex</i>	Common Cinquefoil	<i>Solidago canadense</i>	Canada Goldenrod
<i>Prunella vulgaris</i>	Common Self-Heal	<i>Solidago gigantea</i>	Giant Goldenrod
<i>Prunus serotina</i>	Black Cherry	<i>Sparganium eurycarpum</i>	Broadfruit Bur-Reed
<i>Quercus macrocarpa</i>	Bur Oak	<i>Spartina pectinata</i>	Praire Cordgrass
<i>Quercus palustris</i>	Pin Oak	<i>Stachys palustris</i>	Marsh Hedge Nettle
<i>Quercus velutina</i>	Black Oak	<i>Stachys tenuifolia</i>	Smooth Hedge Nettle
<i>Rhamnus cathartica</i>	Common Buckthorn	<i>Taraxacum officinale</i>	Common Dandelion
<i>Rhus glabra</i>	Smooth Sumac	<i>Teucrium canadense</i>	Canada Germander
<i>Ribes missouriense</i>	Missouri Gooseberry	<i>Tilia americana</i>	American Basswood
<i>Robinia pseudoacacia</i>	Black Locust	<i>Toxicodendron radicans</i>	Poison Ivy
<i>Rorippa sylvestris</i>	Creeping Yellowcress	<i>Trifolium dubium</i>	Suckling Clover
<i>Rosa multiflora</i>	Multiflora Rose	<i>Trifolium hybridum</i>	Alsike Clover
<i>Rubus occidentalis</i>	Black Raspberry	<i>Trifolium pratense</i>	Red Clover
<i>Rubus pensilvanicus</i>	Pennsylvania Blackberry	<i>Typha latifolia</i>	Broadleaf Cattail
<i>Rudbeckia laciniata</i>	Cutleaf Coneflower	<i>Typha X Glauca</i>	White Cattail
<i>Rumex crispus</i>	Curly Dock	<i>Ulmus americana</i>	American Elm
<i>Rumex orbiculatus</i>	Great Water Dock	<i>Ulmus pumila</i>	Siberian Elm
<i>Rumex verticillatus</i>	Swamp Dock	<i>Ulmus rubra</i>	Slippery Elm
<i>Sagittaria latifolia</i>	Broadleaf Arrowhead	<i>Urtica dioica</i>	Stinging Nettle
<i>Salix amygdaloides</i>	Peachleaf Willow	<i>Urtica procera</i>	Tall Nettle
<i>Salix exigua</i>	Narrowleaf Willow	<i>Verbena urticifolia</i>	White Vervain
<i>Salix interior</i>	Sandbar Willow	<i>Viola cucullata</i>	Marsh Blue Violet
<i>Salix nigra</i>	Black Willow	<i>Viola missouriensis</i>	Missouri Violet
<i>Sambucus canadensis</i>	American Elderberry	<i>Viola sororia</i>	Common Blue Violet
<i>Schoenoplectus americanus</i>	Chairmaker's Bulrush	<i>Vitis aestivalis</i>	Summer Grape
<i>Scirpus acutus</i>	Hardstem Bulrush	<i>Vitis riparia</i>	Riverback Grape
<i>Scirpus fluviatilis</i>	River Bulrush	<i>Xanthium strumarium</i>	Common Cocklebur



Insects

123 Species

Scientific/Common Names

<i>Acanalonia bivittata</i>	Two-Striped Planthopper	<i>Delphacodes basivitta</i>	Delphacid Planthopper
<i>Acanalonia conica</i>	Planthopper	<i>Delphacodes campestris</i>	Delphacid Planthopper
<i>Aceratagallia agricola</i>	Leafhopper	<i>Delphacodes pellucida</i>	Delphacid Planthopper
<i>Acrosternum hilare</i>	Green Stink Bug	<i>Diabritica undecimpunctata</i>	Spotted Cucumber Beetle
<i>Acutalis tartarea</i>	Treehopper	<i>Dikraneura angustata</i>	Leafhopper
<i>Aedes Triseriatus</i>	Treehole Mosquito	<i>Dikrella cruentata</i>	Leafhopper
<i>Agallia constricta</i>	Constricted Leafhopper	<i>Draeculacephala antica</i>	Leafhopper
<i>Agalliopsis novella</i>	Leafhopper	<i>Draeculacephala mollipes</i>	Leafhopper
<i>Ammophila genus</i>	Sand Wasp	<i>Draeculacephala robinsoni</i>	Leafhopper
<i>Amphigonalia gothica</i>	Leafhopper	<i>Elymana acuma</i>	Leafhopper
<i>Amplicephalus osborni</i>	Leafhopper	<i>Empoasca erigeron</i>	Leafhopper
<i>Anormenis septentrionalis</i>	Flatid Planthopper	<i>Empoasca fabae</i>	Potato Leafhopper
<i>Apis mellifera</i>	Honey Bee	<i>Enchenopa bivittata</i>	Two-Spotted Treehopper
<i>Arthaldeus pascuellus</i>	Leafhopper	<i>Erasmoneura atra</i>	Leafhopper
<i>Balclutha neglecta</i>	Leafhopper	<i>Erasmoneura vulnerata</i>	Leafhopper
<i>Bruchomorpha oculata</i>	Piglet Bug	<i>Eratoneura bigemina</i>	Leafhopper
<i>Chaetocnema pulicaria</i>	Corn Flea Beatle	<i>Errastunus ocellaris</i>	Leafhopper
<i>Chlorotettix fumidus</i>	Leafhopper	<i>Erythridula noeva</i>	Leafhopper
<i>Chlorotettix galbanatus</i>	Leafhopper	<i>Erythridula sp.</i>	Leafhopper
<i>Chlorotettix lusorius</i>	Leafhopper	<i>Erythroneura cymbium</i>	Leafhopper
<i>Clastoptera proteus</i>	Dogwood Spittlebug	<i>Erythroneura elegans</i>	Leafhopper
<i>Coccinella septempunctata</i>	Seven-Spotted Ladybug	<i>Erythroneura reflecta</i>	Leafhopper
<i>Colladonus clitellarius</i>	Saddleback Leafhopper	<i>Exitianus exitiosus</i>	Gray Lawn Leafhopper
<i>Conocephalus brevipennis</i>	Meadow Katydid	<i>Flexamia areolata</i>	Leafhopper
<i>Danaus plexippus</i>	Monarch Butterfly	<i>Flexamia atlantica</i>	Leafhopper

Insects

Forcipata loca	Leafhopper	Pediopsoidea distinctus	Leafhopper
Graminella fitchii	Leafhopper	Philaenus spumarius	Meadow Spittlebug
Graminella nigrifrons	Leafhopper	Pieris rapae	White Cabbage Butterfly
Graphocephala coccinea	Leafhopper	Pintalia dorsovittata	Cixiid Planthopper
Halictidae spp	Sweat Bee	Pissonotus brunneus	Delphacid Planthopper
Hapithus agitator	Restless Bush Cricket	Pissonotus marginatus	Delphacid Planthopper
Hyles lineata	Sphinx Moth	Planicephalus flavicosta	Leafhopper
Hymetta trifasciata	Leafhopper	Polites peckius	Peck's Skipper
Idiocerus sp.	Leafhopper	Polyamia caperata	Leafhopper
Idiodonus kennicotti	Leafhopper	Polyamia weedi	Leafhopper
Japananus hyalinus	Maple Leafhopper	Popilia japonica	Japanese Beetle
Jikradia olitoria	Leafhopper	Prescottia lobata	Leafhopper
Kybos sp.	Leafhopper	Psammotettix ferratus	Leafhopper
Latalus personatus	Leafhopper	Pselnophorus belfragei	Plume Moth
Latalus sayi	Leafhopper	Pterophylla camelifolia	Common True Katydid
Lepyronia gibbosa	Great Plains Spittlebug	Scaphoideus incisus	Leafhopper
Liburniella ornata	Leafhopper	Scaphoideus titanus	Grapevine Leafhopper
Limenitis archippus	Viceroy Butterfly	Scaphytopius acutus	Sharp-nosed Leafhopper
Macrosteles quadrilineatus	Aster Leafhopper	Schistocerca americana	American Bird Grasshopper
Melanoplus	Grasshopper	Scolia bicincta	Double-Banded Scoliid Wasp
Metcalfa pruinosa	Flatid Planthopper	Scolops sulcipes	Partridge Bug
Microcentrum rhombifolium	Anglewing Katydid	Simulium spp	Black Fly
Myndus sp.	Cixiid Planthopper	Stenocranus brunneus	Delphacid Planthopper
Neocoelidia tumidifrons	Leafhopper	Stictocephala brevis	Treehopper
Neohecalus magnificus	Leafhopper	Stictocephala bubalus	Buffalo Treehopper
Norvellina seminuda	Leafhopper	Tabanus salcifrons	Horse Fly
Oecanthus argentinus	Prairie Tree Cricket	Texananus majestus	Leafhopper
Oecanthus fultoni	Snowy Tree Cricket	Thionia simplex	Issid Planthopper
Oliarus sp.	Cixiid Planthopper	Tibicen pronotalis	Walker's Cicada
Orientus ishidae	Japanese Leafhopper	Tibicen canicularis	Dog-day Cicada
Ormenoides venusta	Flatid Planthopper	Tinodera sinensis	Chinese Mantis
Osbornellus auronitens	Leafhopper	Toya propinqua	Delphacid Planthopper
Osbornellus consors	Leafhopper	Tylozygus bifidus	Leafhopper
Papilio polyxenes	Black Swallowtail	Typhlocyba modesta	Leafhopper
Paraphlepsius eburneolus	Leafhopper	Vanduzeeia arquata	Black Locust Treehopper
Paraphlepsius irroratus	Irrorate Leafhopper	Xestocephalus	Leafhopper
Paraphlepsius tennesseus	Leafhopper	desertorum	



Birds

97 Species

Scientific/Common Names

<i>Actitis macularius</i>	Spotted Sandpiper	<i>Colaptes auratus</i>	Northern Flicker
<i>Agelaius phoeniceus</i>	Red-Winged Blackbird	<i>Contopus cooperi</i>	Olive-Sided Flycatcher
<i>Aix sponsa</i>	Wood Duck	<i>Contopus virens</i>	Eastern Wood-Pewee
<i>Anas discors</i>	Blue-Winged Teal	<i>Corvus brachyrhynchos</i>	American Crow
<i>Anas platyrhynchos</i>	Mallard	<i>Cyanocitta cristata</i>	Blue Jay
<i>Archilochus colubris</i>	Ruby-Throated Hummingbird	<i>Dryocopus pileatus</i>	Pileated Woodpecker
<i>Ardea alba</i>	Great Egret	<i>Dumetella carolinensis</i>	Gray Catbird
<i>Ardea herodias</i>	Great Blue Heron	<i>Empidonax alnorum</i>	Alder Flycatcher
<i>Baeolophus bicolor</i>	Tufted Titmouse	<i>Empidonax flaviventris</i>	Yellow-Bellied Flycatcher
<i>Bombycilla cedrorum</i>	Cedar Waxwing	<i>Empidonax minimus</i>	Least Flycatcher
<i>Branta canadensis</i>	Canada Goose	<i>Empidonax traillii</i>	Willow Flycatcher
<i>Bubo virginianus</i>	Great Horned Owl	<i>Falco sparverius</i>	American Kestrel
<i>Buteo jamaicensis</i>	Red-Tailed Hawk	<i>Geothlypis trichas</i>	Common Yellowthroat
<i>Buteo lineatus</i>	Red-Shouldered Hawk	<i>Haliaeetus leucocephalus</i>	Bald Eagle
<i>Cardellina canadensis</i>	Canada Warbler	<i>Hirundo rustica</i>	Barn Swallow
<i>Cardellina pusilla</i>	Wilson's Warbler	<i>Icterus galbula</i>	Baltimore Oriole
<i>Cardinalis cardinalis</i>	Northern Cardinal	<i>Larus delawarensis</i>	Ring-billed Gull
<i>Cathartes aura</i>	Turkey Vulture	<i>Megaceryle alcyon</i>	Belted Kingfisher
<i>Certhia americana</i>	Brown Creeper	<i>Megascops asio</i>	Eastern Screech-Owl
<i>Chaetura pelagica</i>	Chimney Swift	<i>Melanerpes carolinus</i>	Red-Bellied Woodpecker
<i>Charadrius vociferus</i>	Killdeer	<i>Melanerpes erythrocephalus</i>	Red-Headed Woodpecker
<i>Chordeiles minor</i>	Common Nighthawk	<i>Meleagris gallopavo</i>	Wild Turkey
<i>Coccyzus americanus</i>	Yellow-Billed Cuckoo	<i>Melospiza melodia</i>	Song Sparrow

Birds

<i>Mniotilta varia</i>	Black-and-White Warbler	<i>Setophaga magnolia</i>	Magnolia Warbler
<i>Molothrus ater</i>	Brown-Headed Cowbird	<i>Setophaga pensylvanica</i>	Chestnut-sided Warbler
<i>Myiarchus crinitus</i>	Great Crested Flycatcher	<i>Setophaga petechia</i>	Yellow Warbler
<i>Nycticorax nycticorax</i>	Black-Crowned Night-Heron	<i>Setophaga ruticilla</i>	American Redstart
<i>Oreothlypis celata</i>	Orange-Crowned Warbler	<i>Sialia sialis</i>	Eastern Bluebird
<i>Oreothlypis peregrina</i>	Tennessee Warbler	<i>Sitta carolinensis</i>	White-Breasted Nuthatch
<i>Oreothlypis ruficapilla</i>	Nashville Warbler	<i>Spinus tristis</i>	American Goldfinch
<i>Parkesia noveboracensis</i>	Northern Waterthrush	<i>Spizella passerina</i>	Chipping Sparrow
<i>Passer domesticus</i>	House Sparrow	<i>Stelgidopteryx</i>	Northern Rough-Winged
<i>Passerina cyanea</i>	Indigo Bunting	<i>serripennis</i>	Swallow
<i>Phasianus colchicus</i>	Ring-Necked Pheasant	<i>Strix varia</i>	Barred Owl
<i>Pheucticus ludovicianus</i>	Rose-Breasted Grosbeak	<i>Sturnus vulgaris</i>	European Starling
<i>Picoides pubescens</i>	Downy Woodpecker	<i>Tachycineta bicolor</i>	Tree Swallow
<i>Picoides villosus</i>	Hairy Woodpecker	<i>Thryothorus ludovicianus</i>	Carolina Wren
<i>Poecile atricapillus</i>	Black-Capped Chickadee	<i>Toxostoma rufum</i>	Brown Thrasher
<i>Polioptila caerulea</i>	Blue-Gray Gnatcatcher	<i>Tringa solitaria</i>	Solitary Sandpiper
<i>Porzana carolina</i>	Sora	<i>Troglodytes aedon</i>	House Wren
<i>Protonotaria citrea</i>	Prothonotary Warbler	<i>Turdus migratorius</i>	American Robin
<i>Quiscalus quiscula</i>	Common Grackle	<i>Tyrannus tyrannus</i>	Eastern Kingbird
<i>Sayornis phoebe</i>	Eastern Phoebe	<i>Vermivora chrysoptera</i>	Golden-Winged Warbler
<i>Scolopax minor</i>	American Woodcock	<i>Vermivora cyanoptera</i>	Blue-Winged Warbler
<i>Seiurus aurocapilla</i>	Ovenbird	<i>Vireo bellii</i>	Bell's Vireo
<i>Setophaga americana</i>	Northern Parula	<i>Vireo flavifrons</i>	Yellow-Throated Vireo
<i>Setophaga castanea</i>	Bay-Breasted Warbler	<i>Vireo gilvus</i>	Warbling Vireo
<i>Setophaga dominica</i>	Yellow-Throated Warbler	<i>Vireo olivaceus</i>	Red-Eyed Vireo
<i>Setophaga fusca</i>	Blackburnian Warbler	<i>Zenaid macroura</i>	Mourning Dove



Amphibians/Reptiles

10 Species

Scientific/Common Names

Amphibians

<i>Acris crepitans</i>	Northern Cricket Frog
<i>Bufo americanus</i>	American Toad
<i>Hyla versicolor</i>	Eastern Gray Treefrog
<i>Rana catesbeiana</i>	American Bullfrog
<i>Rana clamitans</i>	Northern Green Frog
<i>Rana pipiens</i>	Northern Leopard Frog



Reptiles

<i>Chrysemys picta</i>	Eastern Painted Turtle
<i>Nerodia sipedon</i>	Northern Water Snake
<i>Pantherophis vulpina</i>	Western Fox Snake
<i>Thamnophis sirtalis</i>	Common Garter Snake

Mammals/Worms

10 Species

Scientific/Common Names

Mammals

<i>Didelphis virginiana</i>	Virginia Opossum
<i>Mephitis mephitis</i>	Striped Skunk
<i>Mustela vison</i>	American Mink
<i>Odocoileus virginianus</i>	White-Tailed Deer
<i>Ondatra zibethicus</i>	Common Muskrat
<i>Procyon lotor</i>	Northern Raccoon
<i>Sciurus carolinensis</i>	Eastern Gray Squirrel
<i>Sciurus niger</i>	Eastern Fox Squirrel

Worms

<i>Lumbricus rubellus</i>	Red Earthworm
<i>Lumbricus</i> spp. (juvenile)	Earthworm

Summary Report

Bio-Diversity Day
Green Valley Nature Preserve
August 31, 2013

Findings:

429 Species

189 Plant Species

123 Insect Species

97 Bird Species

6 Amphibian Species

8 Mammal Species

4 Reptile Species

2 Worm Species

