

River Action, Retain the Rain College and the Quad City Watershed Plans

River
Action



Quad Cities

River Action

www.riveraction.org



Retain the Rain College



Quad City Watershed Plans

Duck Creek and Rock River

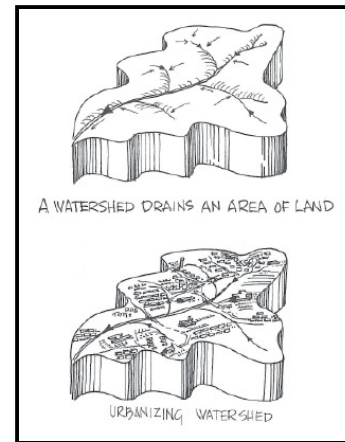


**Watershed Improvement Review
Board (W.I.R.B.) Grant**

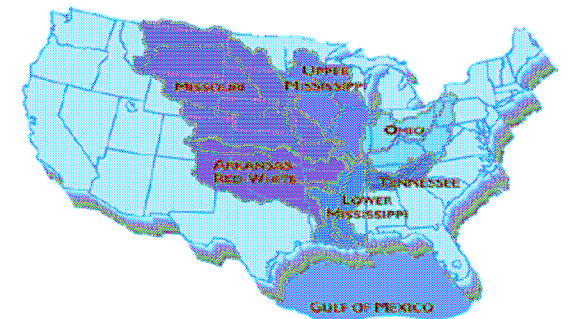
**Iowa Department of Agriculture and Land
Stewardship**

Quad City Watershed Plans, Duck Creek and Rock River

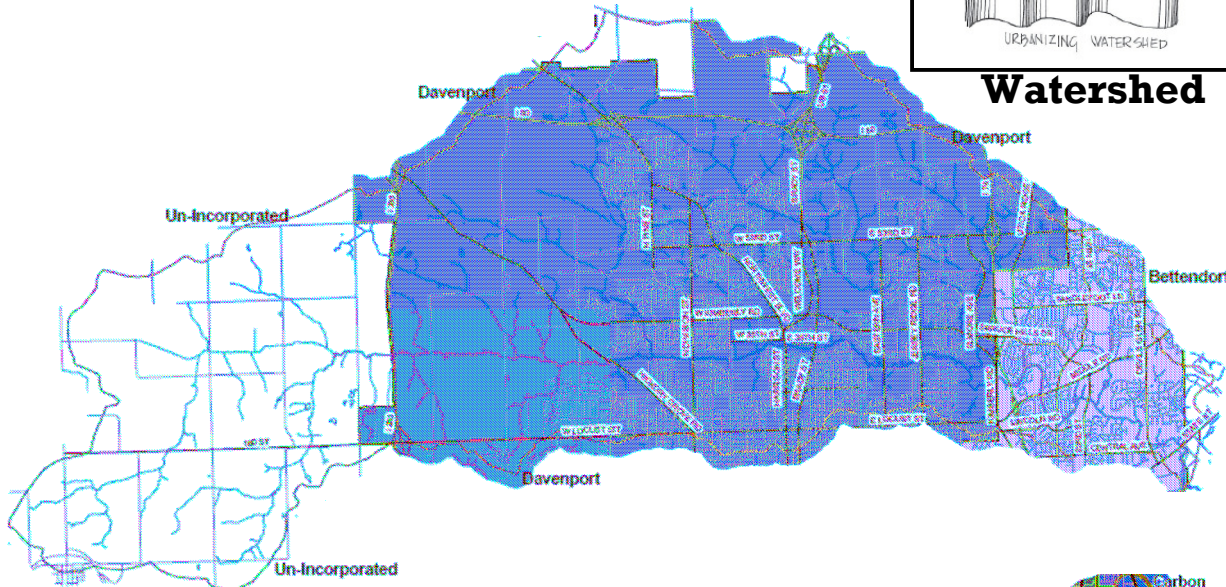
- Watershed Planning Process
- Watershed Defined
- Creating the Watershed Plans



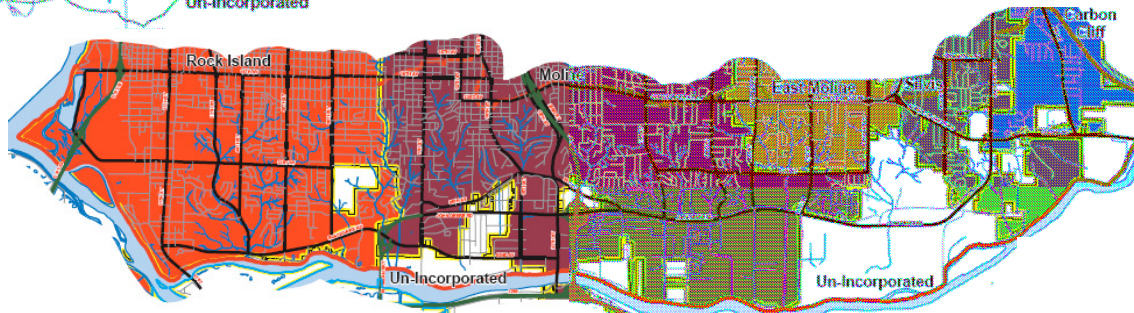
Watershed



Mississippi River Watershed



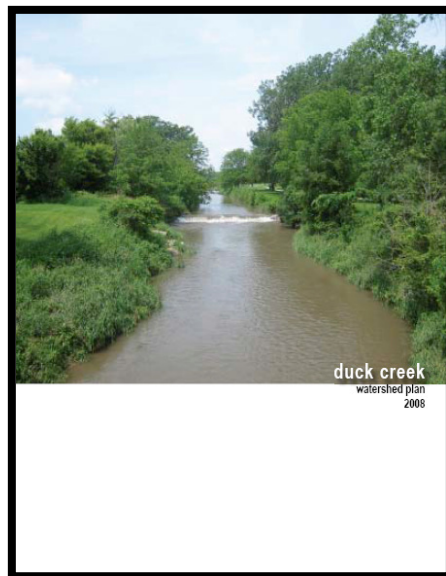
Duck Creek Watershed



Rock River Watershed

Duck Creek and Rock River Watershed Plans, Final Product

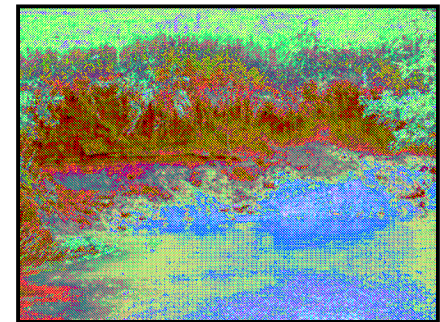
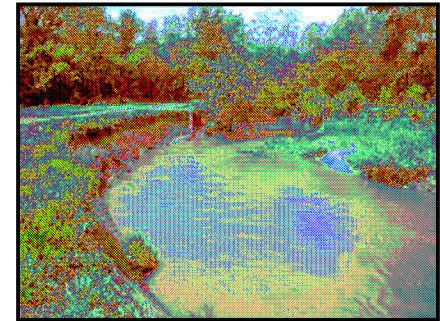
- Final Product-Duck Creek and Rock River Watershed Plans
 - inventory and analysis
 - issues and concerns
 - goals
 - prioritized recommendations
- Awareness and Education of concerns with watersheds and waterways and In-the-ground watershed improvement projects



Duck Creek and Rock River Watersheds, Concerns

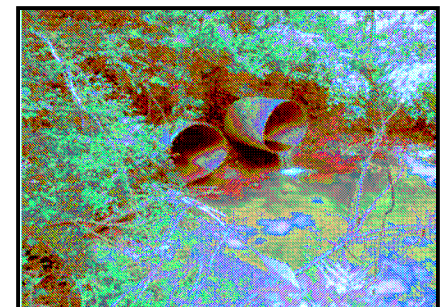
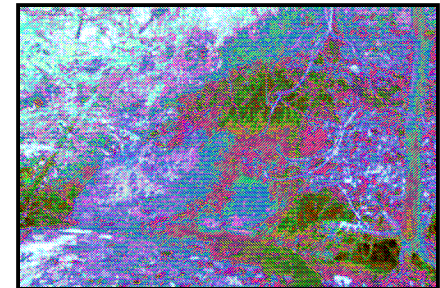
•Duck Creek

- Water quality (E.coli Bacteria)
- Streambank erosion and cut banks
- Excess sediment (soil)
- Lack of habitat for wildlife
- Flooding



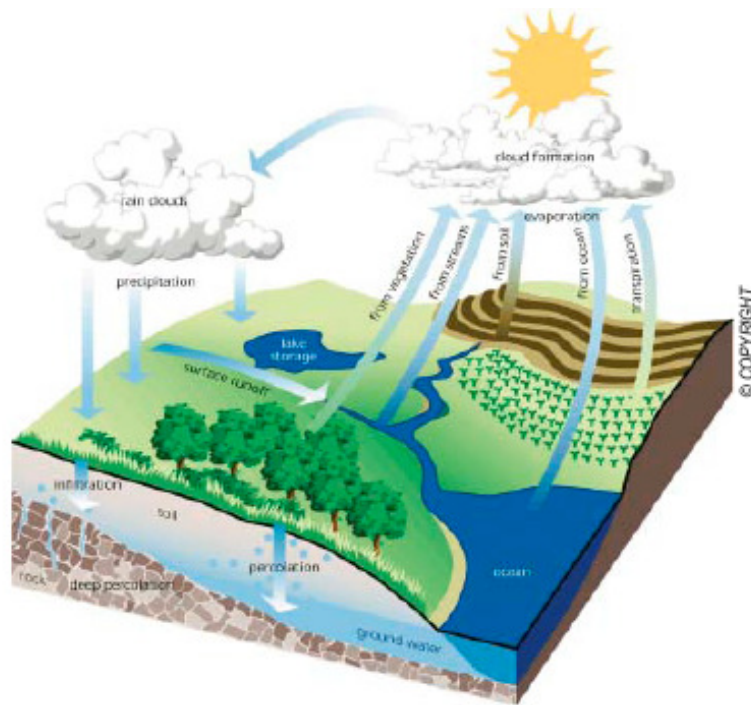
•Rock River

- Water quality (urban pollutants, low dissolved oxygen)
- Severe erosion in ravines
- Excess sediment (soil)
- Lack of beneficial habitat for wildlife
- Flooding

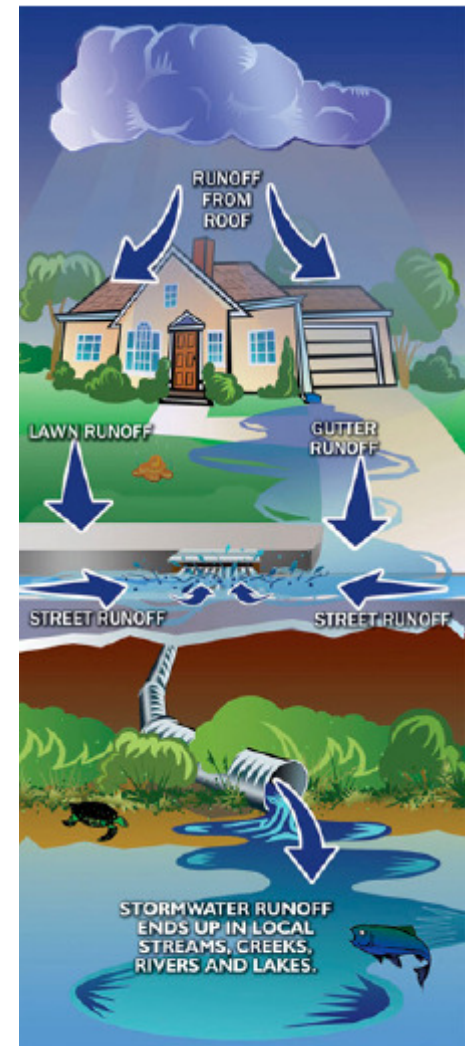


Sources of Watershed Problems

- Historic Land Cover VS. Today's Land Use



VS.

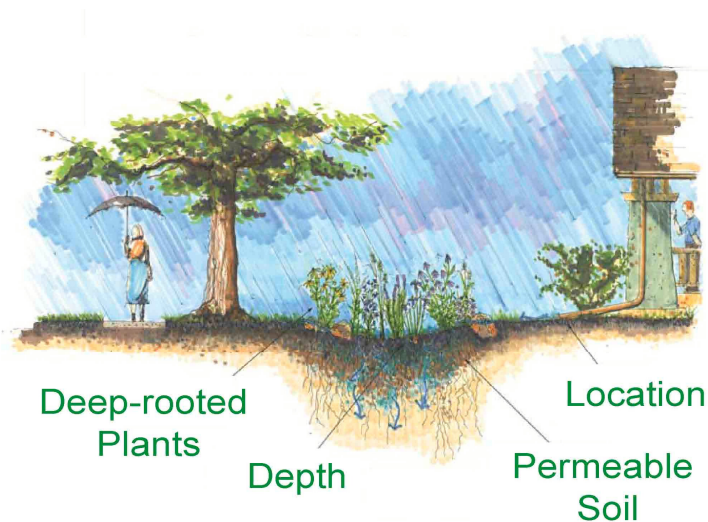


What Can We Do?

•Best Management Practices

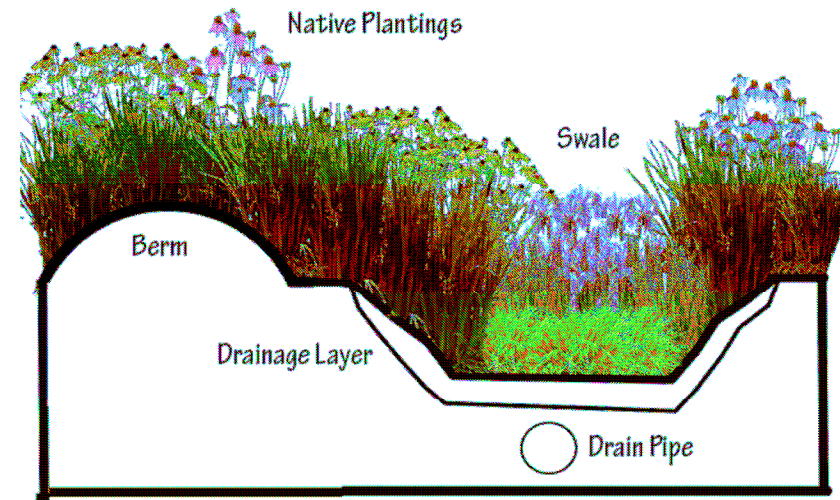
Rain gardens

Shallow depressions, various shapes and sizes, planted with native grasses and flowers that cleanse rainwater and send it back into the ground, restoring natural hydrology. Applicable to residential homes, for example, you could run a downspout to one.



Bioswales

Similar to rain gardens, linear, Applicable for parking lots to capture water that sheets off it during rain events.

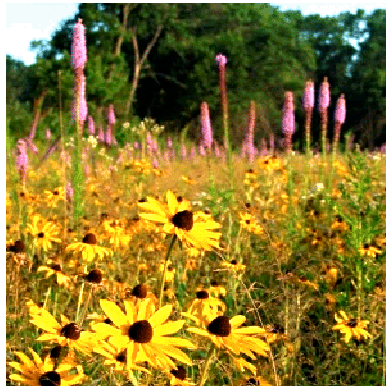


What Can We Do?

- Best Management Practices

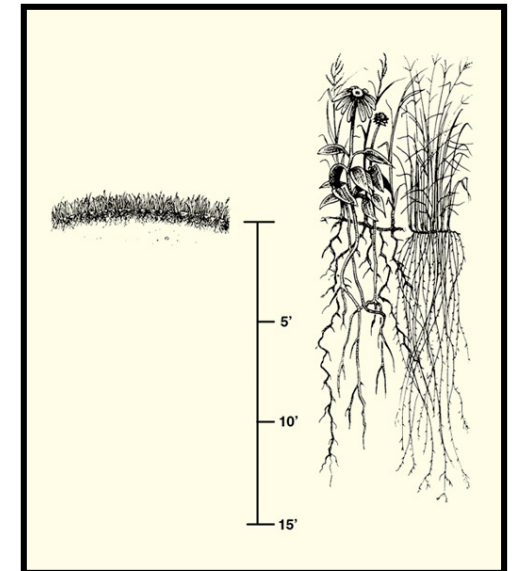
Prairie Restoration

Restoration of existing areas to prairie plants (native grasses and flowers).



Native Landscaping

Installation of native plants (plants present pre-European settlement) with a more manicured landscape or garden appeal.

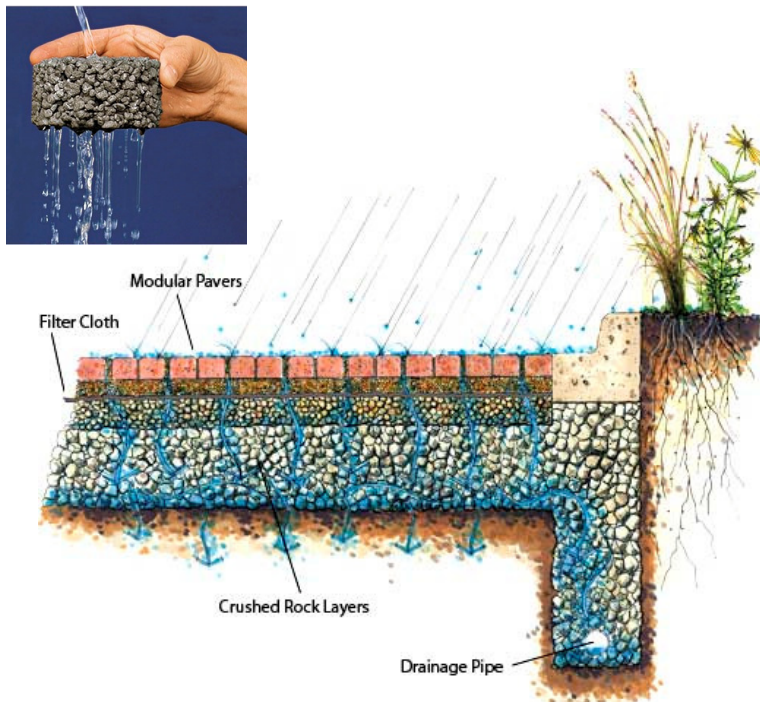


What Can We Do?

•Best Management Practices

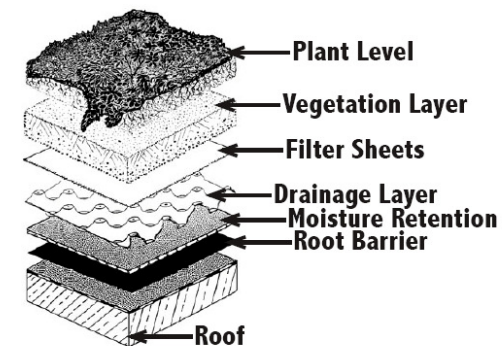
Permeable Paving

Pavers and concrete that allow rainwater to filter through pores in the paving, where it is held in a storage chamber underneath as it seeps back into the groundwater.



Green roofs

Layers of soil medium and plants installed on roof tops, the plants take up rain water lessening roof runoff.



What Can We Do?

- Best Management Practices

Soil Quality Restoration

Reduces compaction, increases pore space and improves organic matter content of lawns by deeply aerating and applying compost.



What Can We Do?

- Best Management Practices

Buffers or Filter Strips

Vegetated areas next to water resources, infiltrates and cleanses surface runoff, provides bank stabilization and aquatic and wildlife habitat.



What Should We Avoid Doing?

- “Not so” Best Management Practices

Failing to pick up pet waste

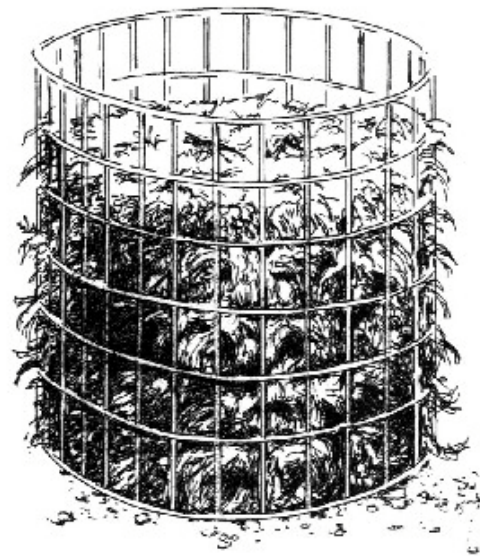


Alternative: Pick up pet waste immediately!

What Should We Avoid Doing?

- “Not so” Best Management Practices

Dumping leaves, grass clippings, yard debris and trash in ravines and yards



compost bin

Alternative: Use a yard bag and purchase stickers, Start a compost pile.

What Should We Avoid Doing?

- “Not so” Best Management Practices

Washing cars in the street

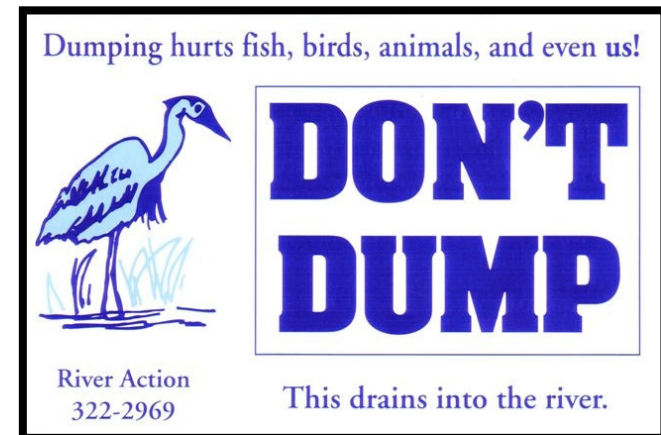


Alternative: Go to a car wash that treats the water or pull car onto the lawn.

What Should We Avoid Doing?

- “Not so” Best Management Practices

Pouring into storm drains

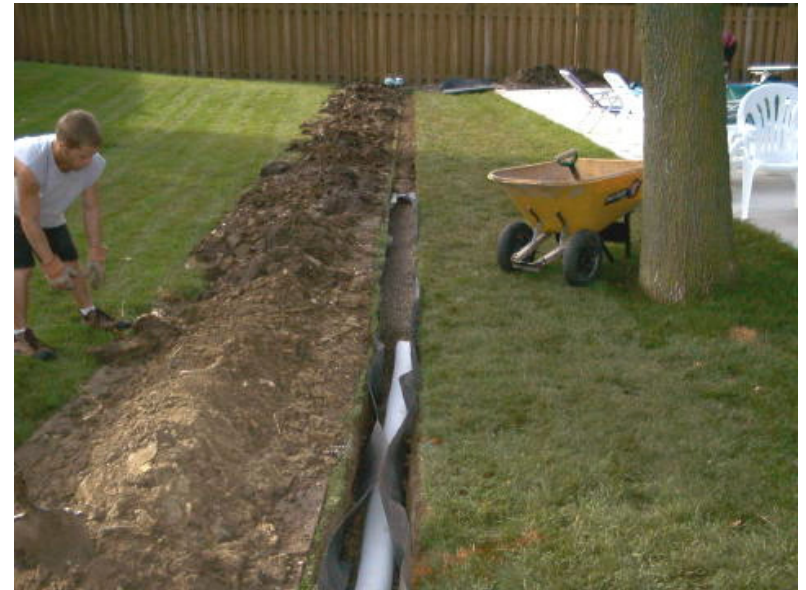


Alternative: Scott County Landfill/Scott County Recycling Center for Scott and Rock Island County Residents by appointment.

What Should We Avoid Doing?

- “Not so” Best Management Practices

Tiling drainage problems

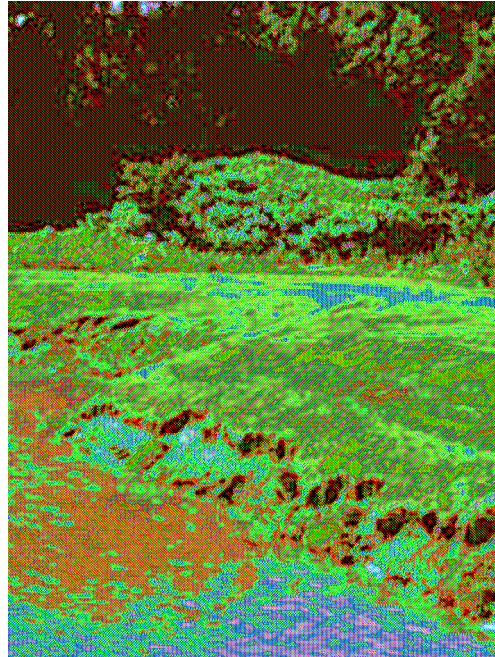


Alternative: Implement a Best Management Practice such as a rain garden or soil quality restoration.

What Should We Avoid Doing?

- “Not so” Best Management Practices

Mowing up to the stream or ravine edge



Alternative: Plant a strip of tall grasses or wildflowers along the edge to serve as a buffer to detour mowing and filter pollutants.

What Should We Avoid Doing?

- “Not so” Best Management Practices

Applying fertilizers and other chemicals to lawns, landscapes and gardens



Alternative: Apply sparingly or not at all, Don't apply before rain or near a waterway, try organic methods, compost, organic lawn treatments, implement native lawns and landscapes that don't require such treatments.

What Should We Avoid Doing?

- “Not so” Best Management Practices

Flushing prescription medications down the toilet



Alternative: Scott County Landfill/Scott County Recycling Center for Scott County and Rock Island County residents by appointment.

Upcoming Retain the Rain College Courses

•**Rain Garden 101 w/Wayne Petersen**, Wednesday, July 15, 6-8pm,
Bettendorf Public Library

•**What's in the Water w/Lynette Seigley**, Wednesday, July 29, 6-8pm,
Scott County Administrative Building

•**Green Home Biology 101**, Thursday, August 6, 11-1pm, Associated General
Contractors of the Quad Cities Conference Room, Rock Island

•**Infiltrating Iowa**, Tuesday, August 18, 6-8pm, Farimount Street Davenport
Library

•**Green Roof 201**, Wednesday, August 26, 3-5pm, McKesson Lofts, Rock Island

