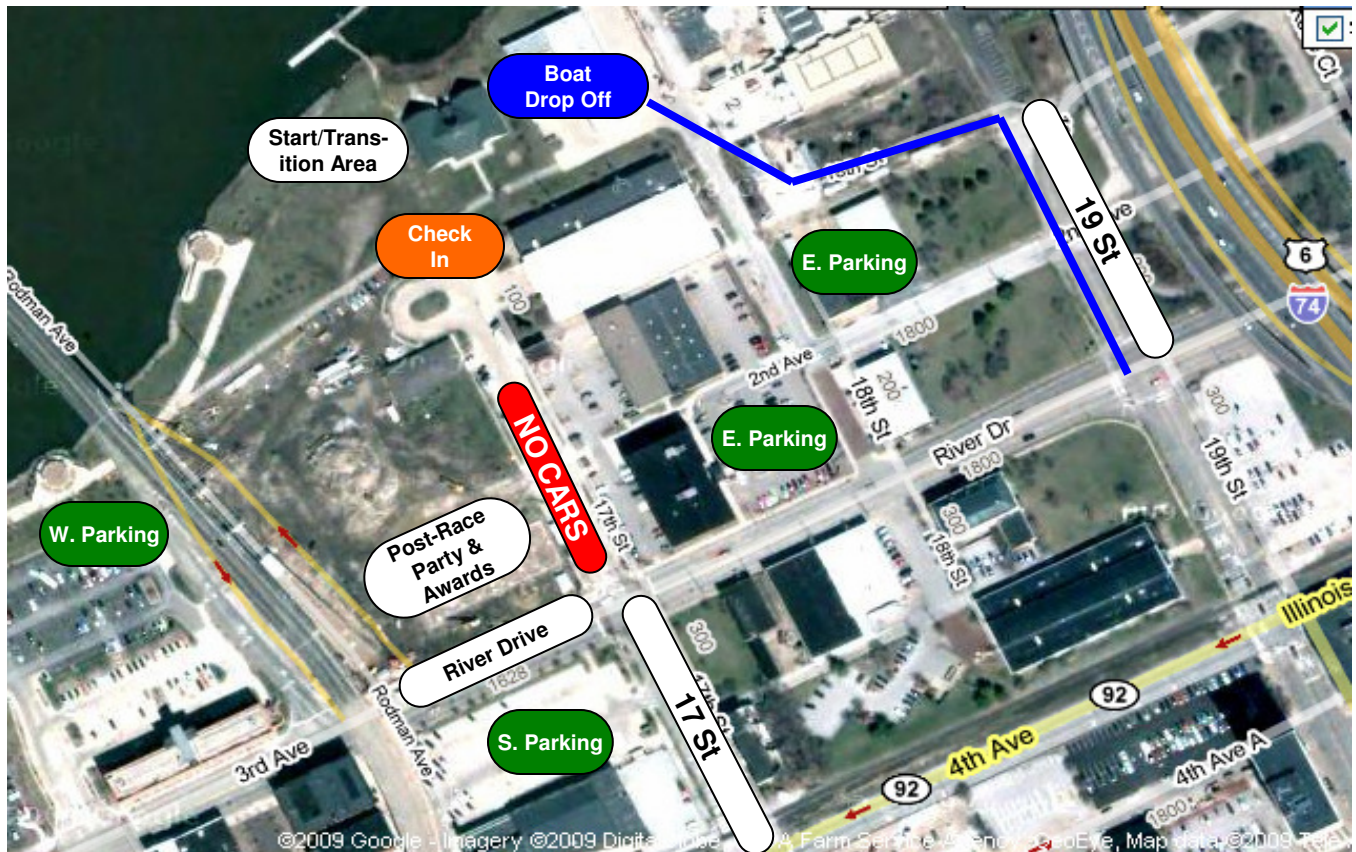


Gear Drop Off & Parking for Taming of the Slough



- Racers with boats can **drop off their gear** on the east side of the QCRA boathouse. **Lot is accessed from River Dr. and 19th St** [turn at stoplight]. If you only have bike gear to unload, please do so in one of the parking areas and walk down to the transition area. Drop off area is for racers with canoes or kayaks.

- Please park in one of the **3 designated spots**. East Parking includes the Shive Hattery building and lot on the NE corner of 18 St. and 2 Ave. Please don't park in the Stoney Creek In lot.

- **Check-In/Timing Chips** picked up in the traffic circle near the boathouse

- **NO CARS OR PARKING** allowed on 17th St north on River Dr. until 11 a.m.

Feel free to call or email with any questions about raceday.

563.322.2969

jcornelius@riveraction.org